

BlueCamroo Release Notes 2.2.2

September 15, 2010

Welcome

These release notes provide a detailed overview of some follow-on updates to BlueCamroo's second major revision.

If you have any comments on these changes or wish to suggest a future change, please [visit our forums](#).

What's New in BlueCamroo?

This September release features a number of small improvements. If you've been using Web-to-Lead and Workflow Rules please note the sections below for details of how to incorporate changes in your current setup.

Adding External Users

External Users are Contacts at client Accounts whom you allow limited access to BlueCamroo. The process of adding External Users has been simplified to make it more intuitive.

Web-to-Lead Setup

Previous versions of **Web-to-Lead** created text-only fields. We've modified the code generator to mirror BlueCamroo's lead details page. For example, if you're collecting the visitor's Industry, Web-to-Lead generates an **Industry** drop-down box populated with the industry list from BlueCamroo.

```
Web-to-Lead form code
<div>
  <label for="industry">Industry</label><select name="industry" id="industry">
<option value="" />
<option value="35">Agriculture</option>
<option value="31">Anglo Egyptian Businesses</option>
<option value="32">Creative Services</option>
<option value="38">Insurance</option>
<option value="37">Investments</option>
</select>
</div>
<div><input class="submit" type="submit" value="Submit"></div>
</form>
```

If you already have a page (or pages) using Web-to-Lead, simply regenerate your form via the **Web-to-Lead** option and paste in the new code.



Workflow Rules



Workflow Rules previously used the email of whichever user's actions triggered the Workflow rule. However, we've now added **From** fields to the Workflow Rule email page to give you the option to "hardcode" who the email sender appears to be.

If you've created some Workflow Rules that generate emails, you might want to revisit these rules and see if a hardcoded "from" email is a better option.

On-Page Help

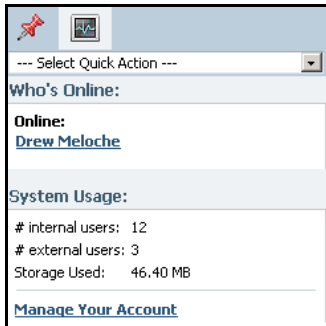
Under Setup, we've increased the amount of on-page help (brief help found on various pages and identified with the checkmark icon ). On-page help gives you key pieces of help. However, expanded, context-sensitive help can always be found by clicking the help button .

Shared Permissions and Taxes Operations

The **Shared Permissions** pages and the **Tax Names** page under **Setup** now have a slightly different operation. Previously if you added a new tax or shared permission, you had to click **Save** to add the item and make a

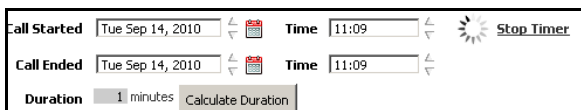
new field available for adding another item. An **Add** button has now been added letting you add your items. Once you're satisfied with your setup, click the **Save** button to save all your updates.

Manage Your Account Link



If you are a System Administrator, when you click the **Stats** button on the Right Pane, you will now find a link that takes you to your BlueCamroo.com account login page.

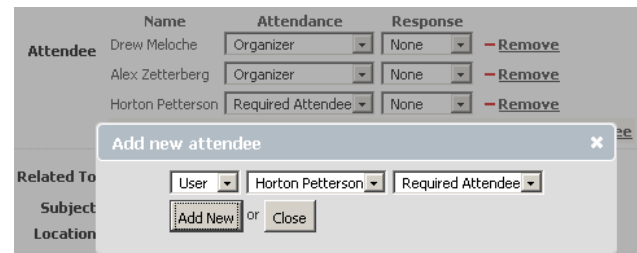
New Call Timer Button



We've added a start/stop icon to the **Log a Call** dialog box. (Previously, the timer started automatically upon opening of the dialog box.) The timer now begins when you click

Start Timer. The icon also has a resume condition allowing you to continue the count up after clicking **Stop Timer.**

Adding Multiple Event Attendees/Internal Messages



We've made it easier to add multiple attendees for Events or multiple recipients for Internal Messages. The dialog box for selecting users now lets you add several users in succession.

Event End Dates

Previously events could only be scheduled within a single day. Events can now be set to straddle multiple days.

Campaign Manager Setup Wizards

Under the **Tools** tab you will find two setup wizards for the Campaign Manager module. One wizard will help you setup the basics and the other will guide you through creating your first email campaign. ♦

Want to Learn More?

If you want to learn more about BlueCamroo, current changes, or engage in dialog with your fellow users, visit Bluecamroo's Community page:

<http://www.bluecamroo.com/bluecamroo-community>

Check out our message board forums:

<http://www.bluecamroo.com/forum/category>

Read and comment on our blog:

<http://www.bluecamroo.com/blog>

Also visit our Help & Support page for tips, FAQs, and additional documentation:

<http://www.bluecamroo.com/bluecamroo-help-and-support>