

# BlueCamroo Release Notes 2.3.2

December 15, 2010

## Welcome

These release notes provide a detailed overview of several enhancements since our November release.

If you have any comments on these changes or wish to suggest a future change, please [visit our forums](#).

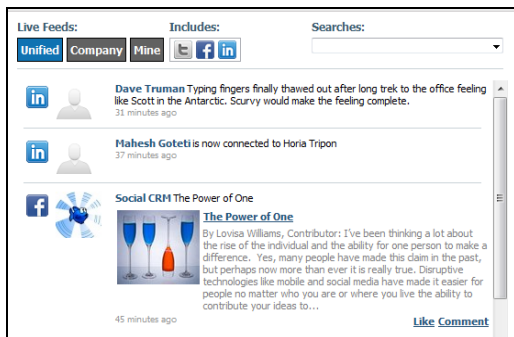
## What's New in BlueCamroo?

December's update offers a variety of general improvements. We've made several changes to Social Network Scout, both on the front end and in Setup. The changes include Facebook support and improved filtering that help reduce "false positive" returns.

Continue reading below for more details regarding these changes.

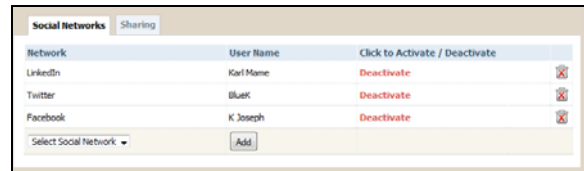
## Social Network Scout

### Feed Filtering



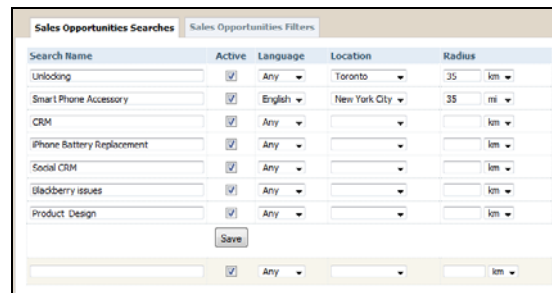
We've added a button bar to the Social Network Scout feed. You can click a button and view all feeds, only your company feed, or only your own feed. Another button grouping lets you toggle on/off the display of Twitter, Facebook, and LinkedIn in all displayed feeds.

## Facebook

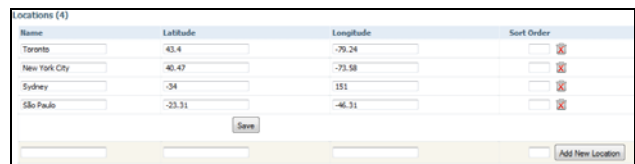


You can now add your own Facebook account to the feed under your **My Social Networks** page. Those with Admin access can add a company Facebook account to the **Social Networks** setup page.

## Location and Language Search Restrictions



You can restrict Social Network Scout search results to only messages matching a specified language or a geographic area. A **Locations** option has been added under the Social Network Scout setup menu where you can configure the locations that are of interest to you for searching by inputting longitude and latitude (which you can easily find using Google Maps).



## "Not" Keywords in Searches

Add Keywords for: **Smart Phone Buzz** search

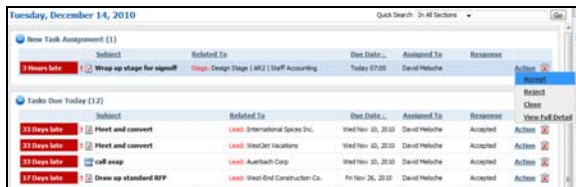
Keywords	Active	Not	Sort Order		
iphone	<input checked="" type="checkbox"/>	<input type="checkbox"/>		<input type="text"/>	<input type="button" value="X"/>
htc	<input checked="" type="checkbox"/>	<input type="checkbox"/>			<input type="button" value="X"/>
samsung galaxy	<input checked="" type="checkbox"/>	<input type="checkbox"/>			<input type="button" value="X"/>
blackberry	<input checked="" type="checkbox"/>	<input type="checkbox"/>			<input type="button" value="X"/>
free	<input checked="" type="checkbox"/>	<input checked="" type="checkbox"/>			<input type="button" value="X"/>
sale	<input checked="" type="checkbox"/>	<input checked="" type="checkbox"/>			<input type="button" value="X"/>
win	<input checked="" type="checkbox"/>	<input checked="" type="checkbox"/>			<input type="button" value="X"/>

We've added a **Not** checkbox next to each keyword field. If checked, Social Network Scout will not display messages that contain the keyword. This is equivalent to a Boolean "not" search. This is useful to filter out false positives.

## LinkedIn Commenting

You can now comment and "like" LinkedIn messages that appear in your feed. If you comment on a LinkedIn message shared with you, the comment will appear to come from the person sharing.

## New Task Assignments on the Home Page



Following feedback from some customers that colleagues were forgetting to check their "New Tasks Assigned to Me" list, the **Home** page now displays newly assigned tasks.

## Required Fields: Adding a Background Color

If you have a color blind user, the red box around mandatory fields can be a problem. BlueCamroo now lets you specify a background color for required fields.

Login Screen Themes **Advanced**

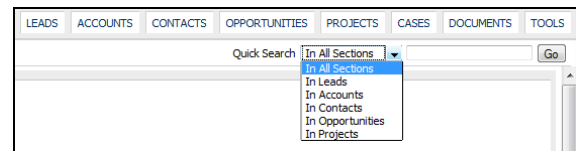
```

.require input[type="text"], input.require, .require textarea,
.require select, .require input[type="password"]
{
background-color: #00FFFF;
} /* require field style */
  
```

**Additional Styles**

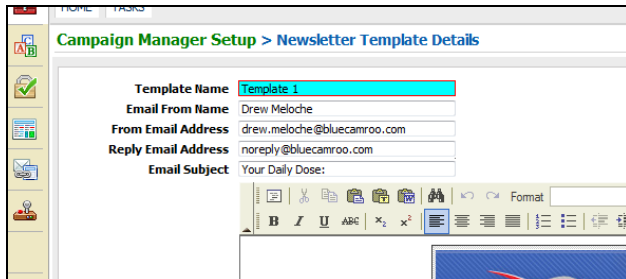
Click the **Advanced** tab on Setup's UI Customization page. The CSS code that controls required fields is stubbed in the **Additional Styles** field. You can add a *background-color* property between the brackets { } to add a background.

## Quick Search



The **Quick Search** option (found just under the tab bar) is now available when you're on any tab. Additionally, a drop-down box allows you to search all or a specific section regardless of which tab you're on.

## Campaign Manager Template

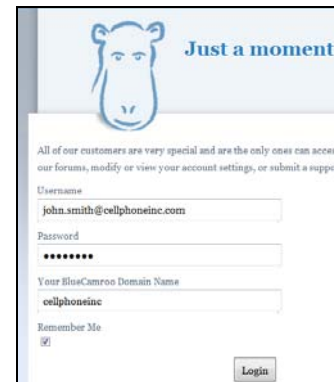


Campaign Manager templates now allow you to specify default **From** details and text you might always want to have present in the **Subject** field.

## Log In to the Bluecamroo.com Site

For your convenience we've simplified the login process to the Bluecamroo.com site. Previously you were required to enter your full domain name.

For example if your domain was **http://cellphoneinc.bluecamroo.com**, you had to enter **cellphoneinc.bluecamroo.com**. You can now enter just the company portion of your domain. So you would just enter **cellphoneinc** in the **Your BlueCamroo Domain Name** field. ◆



### Want to Learn More?

If you want to learn more about BlueCamroo, current changes, or engage in dialog with your fellow users, visit BlueCamroo Community page:

<http://www.bluecamroo.com/bluecamroo-community>

Check out our message board forums:

<http://www.bluecamroo.com/forum/category>

Read and comment on our blog:

<http://www.bluecamroo.com/blog>

Also visit our Help & Support page for tips, FAQs, and additional documentation:

<http://www.bluecamroo.com/bluecamroo-help-and-support>